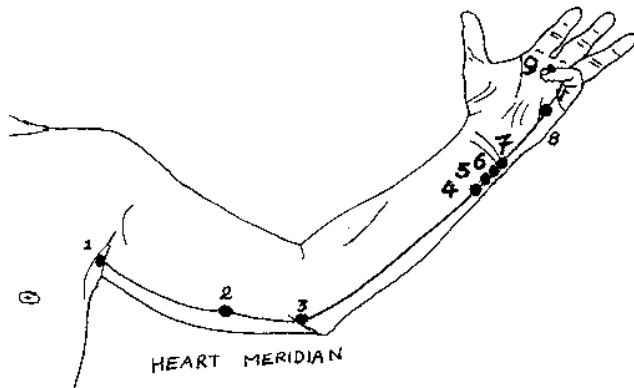
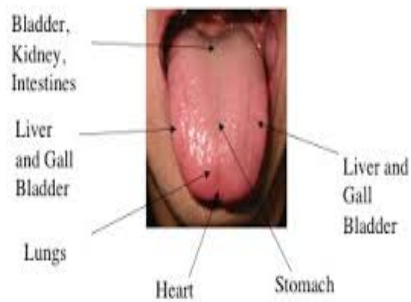


HEART REPRESENTED IN THE BODY

Heart Meridian



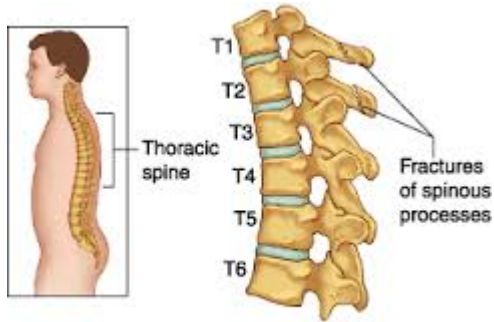
Tip of the tongue



Tip of the nose represents heart



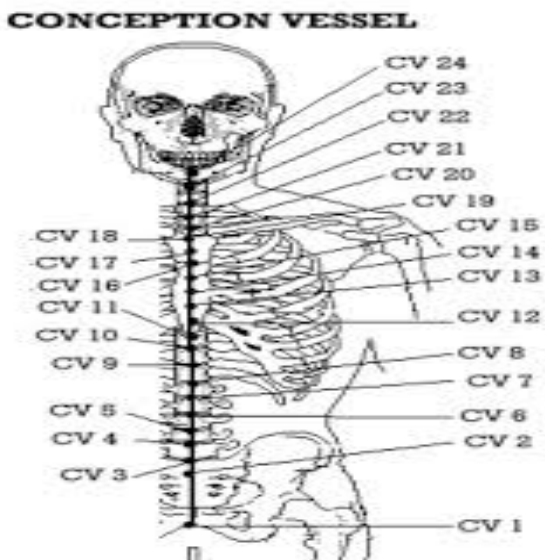
Vertebral spine heart points are T1= heart and T2 =pericardium



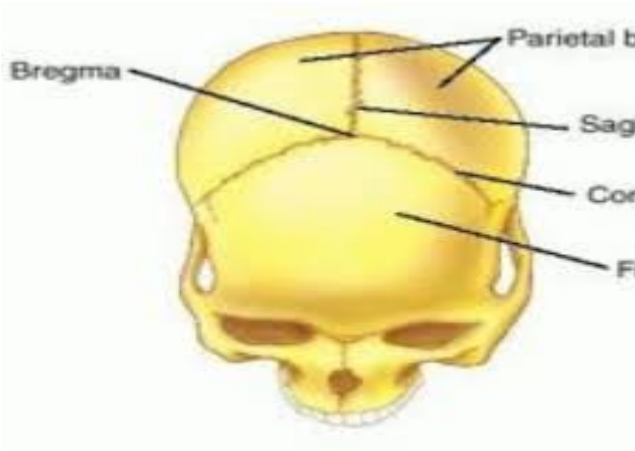
4th Chakra Center



Physical Heart=CV 17 and Emotional Heart /Alarm Point=CV 14



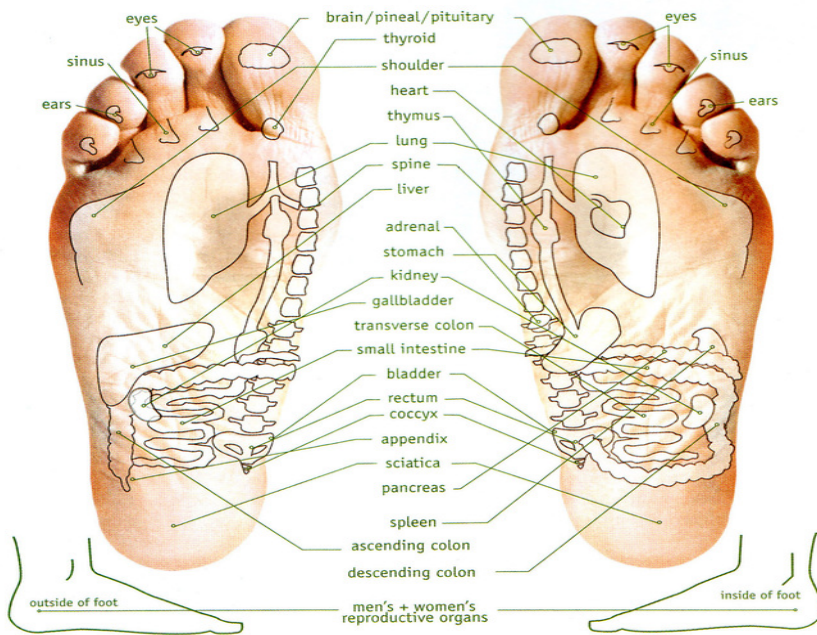
Bregma: Neurovascular point on the head



Sedation Point-Heart 7



Vita-Flex Foot Chart



aFlex

Vita-Flex Hand Chart

